



Wayland Manor

NEW YORK STYLE LIVING AT PROVIDENCE PRICES



AMENITIES

Wayland Manor offers apartments with scenic views that range in size from studios to luxurious one, two and three bedroom suites. Our full-time staff provides a wide range of ancillary services. Conveniently located on Providence's historic East Side, the Wayland Manor is a landmark building. A home to both young and old, its residents find life at the Manor to be both safe and enjoyable.

OUR AMENITIES INCLUDE:

- *All Utilities Included
- 24-Hour Concierge
- 24-Hour Fitness Center
- 24-Hour Emergency Maintenance Services
- Twist on Angell Restaurant
- Femme Fatale Salon
- Tailor Shop/Dry Cleaning
- Laundry Services
- On-Site Parking
- On-Site Management
- On-Site Maintenance Staff
- Courteous, Professional Staff



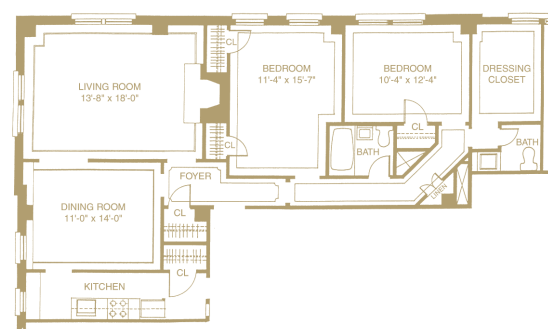
WAYLAND MANOR

500 ANGELL STREET, PROVIDENCE, RI 02906

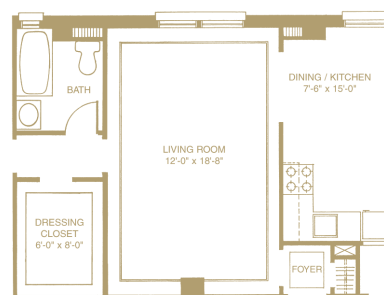
T: 401.751.7700 F: 401.751.6726

WWW.WAYLANDMANOR.COM

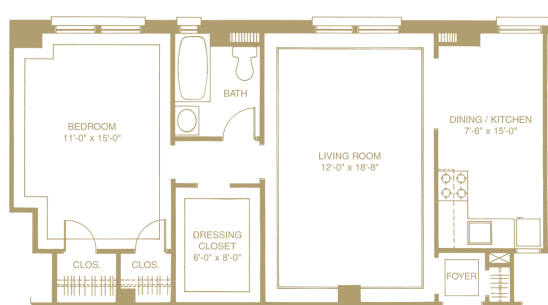
Professionally managed by



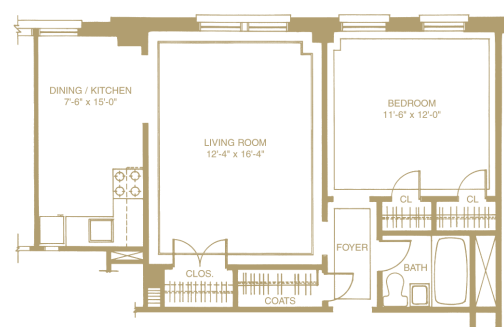
TWO BEDROOM
APPROXIMATELY 1,318 SQUARE FEET



LARGE STUDIO
APPROXIMATELY 485 SQUARE FEET



ONE BEDROOM — TYPE 15
APPROXIMATELY 693 SQUARE FEET



ONE BEDROOM — TYPE 31
APPROXIMATELY 627 SQUARE FEET

(OTHER FLOOR PLANS AVAILABLE)



Wayland Manor

NEW YORK STYLE LIVING AT PROVIDENCE PRICES

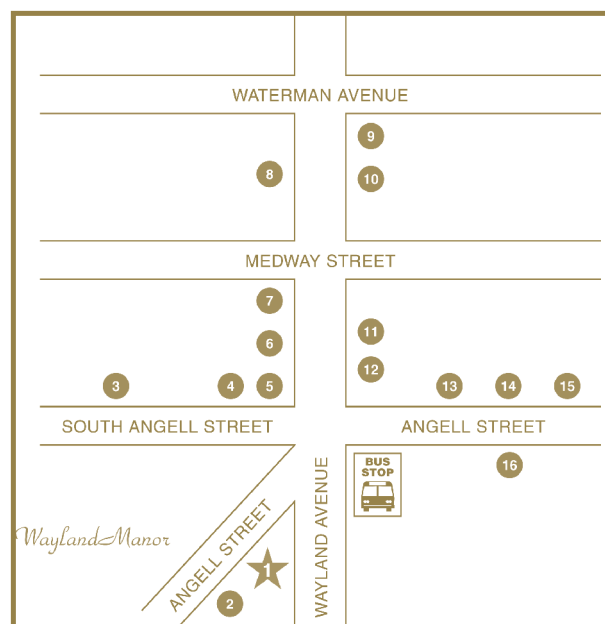


WHAT'S NEARBY?

WAYLAND SQUARE, RESTAURANTS, STORES & MORE!

A simple stroll takes you from your front door to their front door. There are also many more businesses within walking distance that are not listed here and we have a public transportation bus stop close by.

1. WAYLAND MANOR
2. TWIST ON ANGELL • RESTAURANT
3. ANGELL NAIL SALON
4. MYOPIC BOOKS
5. COMINA • HOUSEWARES
6. THE EDGE • COFFEE SHOP
7. CHICO'S • WOMEN'S CLOTHING
8. RELIABLE GOLD • JEWELRY
9. HARUKI • JAPANESE RESTAURANT
10. FARMSTEAD • CHEESE & RESTAURANT
11. WAYLAND WINE
12. RUFFUL'S • RESTAURANT
13. STRANDS SALON
14. CVS
15. BANK OF AMERICA
16. STARBUCKS



DIRECTIONS

FROM POINTS SOUTH

1. Take route I-95 heading north toward Providence.
2. Merge onto route I-95 east.
3. Take the INDIA STREET EXIT (EXIT 2) toward GANO STREET.
4. Turn LEFT onto INDIA STREET.
5. Turn RIGHT onto GANO STREET.
6. Turn RIGHT onto PITMAN STREET.
7. Turn LEFT onto WAYLAND AVENUE.
8. Turn RIGHT onto ANGELL STREET.
9. 500 ANGELL STREET IS ON THE LEFT.

FROM POINTS NORTH

1. Take route I-95 heading south toward Providence.
2. Take the route I-195 EAST EXIT (EXIT 20) toward Gano Street.
3. Take the GANO STREET EXIT (EXIT 2) toward Gano Street.
4. Turn LEFT toward GANO STREET.
5. Turn RIGHT onto GANO STREET—follow 1.0 mile.
6. Turn RIGHT onto PITMAN STREET.
7. Take first LEFT onto WAYLAND AVENUE—follow 1.0 mile.
8. Turn RIGHT onto ANGELL STREET.
9. 500 ANGELL STREET IS ON THE LEFT.



WAYLAND MANOR

500 ANGELL STREET, PROVIDENCE, RI 02906

T: 401.751.7700 F: 401.751.6726

WWW.WAYLANDMANOR.COM

Professionally managed by

